

Funded Legal Program

Use your legal expertise to serve your country.



High performing officers and enlisted members can apply for the Coast Guard's Juris Doctor Advanced Education Program. You'll continue to serve on active duty—accruing active service time and receiving active duty pay and benefits—while in law school and join CGJAG after graduating.

CGJAG supports the Coast Guard across the full spectrum of operations and mission support. Judge advocates serve in various roles as advisors, counselors, and advocates. They administer military justice by advising leaders and serving as prosecutors, defense counsel, and special victims' counsel in courts martial. Judge advocates can practice in multiple areas of the law and compete for nonlegal, out-of-specialty assignments.

Experience	2
Locations	2
Practice Areas	3
Eligibility Requirements.....	4
Application Deadlines.....	4
Application Process	4
Selection	4
Law School & Training Overview	5
Service Obligation.....	6
Grade	6

Experience

- **Gain immediate experience.** You'll receive more leadership, sooner. We elevate our judge advocates to positions of leadership early in their career.
- **Practice law in diverse areas.** CGJAG supports the Coast Guard's 11 statutory missions from search and rescue to drug interdiction to maritime environmental protection. Our lawyers can prosecute transnational crime rings, write bilateral agreements with friendly nations, and serve as professors at the Naval War College. You'll typically rotate to a new office every 3 years.
- **Serve in great locations.** The vast majority of legal jobs are in major, coastal U.S. cities. Every District and Area has a servicing legal office.
- **Work with an outstanding team.** CGJAG is a very small community of close-knit practitioners that support each other and the Coast Guard's people.

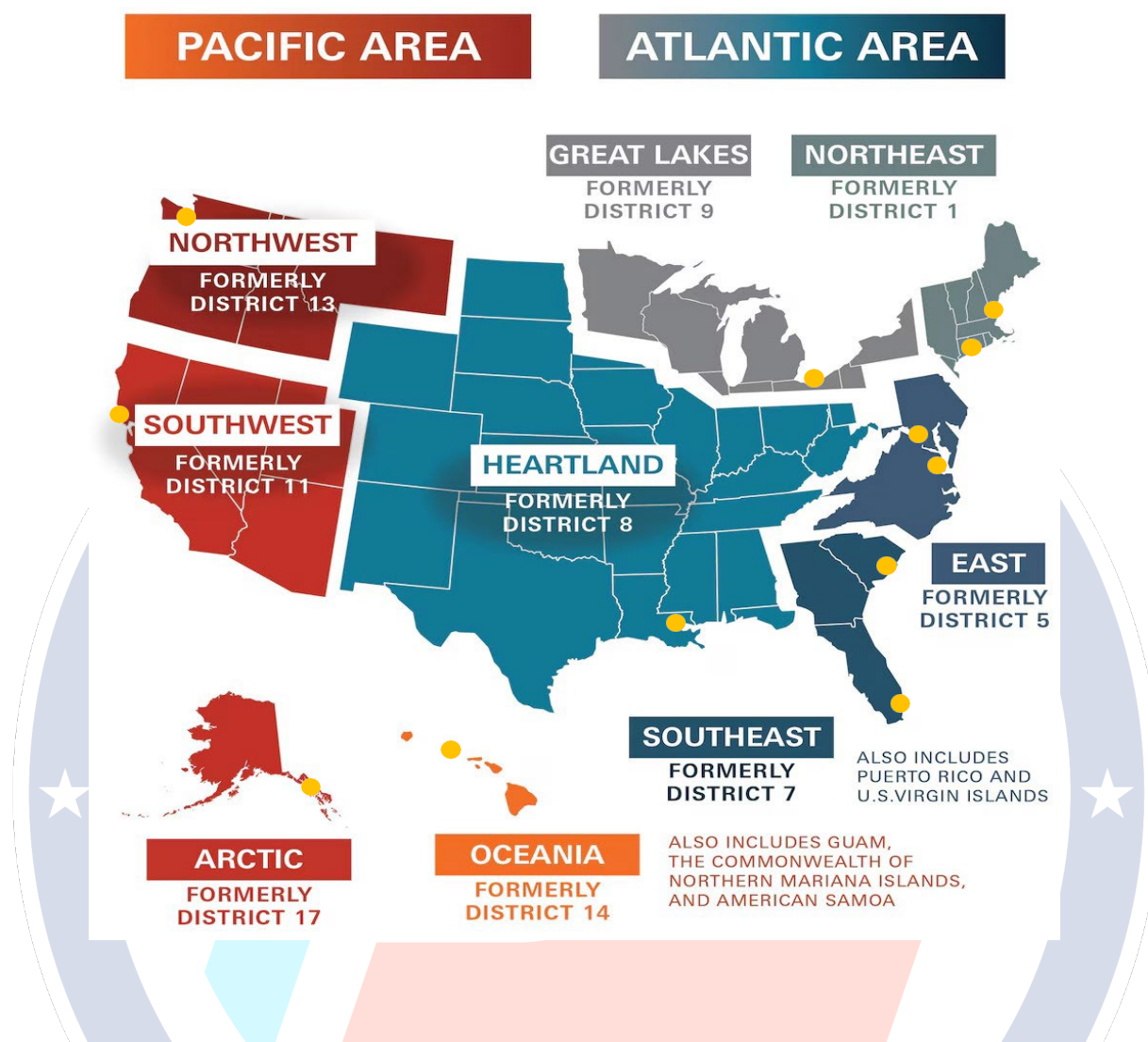
Locations

Judge advocates are assigned to legal offices across the U.S. for 2-3 year tours. Overseas opportunities may be available as you progress through your career.

Primary legal office locations include

- Washington, DC
- Charleston, SC
- Boston, MA
- Norfolk/Portsmouth, VA
- Miami, FL
- New Orleans, LA
- Yorktown, VA
- Cleveland, OH
- Alameda, CA
- New London, CT
- Cape May, NJ
- Seattle, WA
- Honolulu, HI
- Juneau, AK

U.S. Coast Guard
Office of the Judge Advocate General



Practice Areas

As a judge advocate, you will work in diverse practice areas throughout your career. You'll rotate to a new legal office every 2-3 years.

Practice areas include

- Military Justice (Criminal Law)
- Maritime and International Law
- Environmental Law
- Intelligence and Information Law
- General (Fiscal, Employment, Ethics, Real Property, Administrative) Law
- Civil Litigation
- Cyber Law

Eligibility Requirements

Active-duty personnel whose performance and judgment demonstrate exceptional ability, dedication to mission and their shipmates, and commitment to excellence are ideal candidates. Both officers and enlisted members are eligible to apply.

Members should review the latest Postgraduate and Advanced Education Application process ALCOAST and the [OPM-1 Postgraduate & Advanced Education Panels page](#) for eligibility criteria and waivers.

Application Deadlines

Advanced Education Program application deadlines are announced via ALCOAST annually in early spring. Applications are typically due in May, and the panel typically convenes in June.

Application Process

Members should review the latest Postgraduate and Advanced Education Application process ALCOAST and the [OPM-1 Postgraduate & Advanced Education Panels page](#) for the current assignment year's application guide and timelines.

Among other requirements, the application process includes a submission in Direct Access and a separate funded J.D. program application package including a personal narrative, command endorsement, letters of recommendation, proof of LSAT score, and transcripts for degrees in progress.

Selection

Primary and alternate selections will be announced via ALCOAST after the Postgraduate and Advanced Education panel adjourns and the results are approved.

Law School & Training Overview

1. Applying to Law Schools

Selectees should anticipate applying to law schools beginning in the fall of the year they're selected.

2. Law School

Selectees will begin law school in the fall of the following year. During law school, all selectees remain on active duty and continue to receive active duty pay and benefits and accrue time in service.

3. Summer Internships

During 1L and 2L summers, selectees are required to complete internships at a Coast Guard Legal Office.

4. Direct Commission Officer (DCO) Course

★ After taking the bar exam, enlisted members will receive orders to the 4-week DCO Course at the Coast Guard Academy in New London, Connecticut. The course includes instruction on Coast Guard leadership principles, organizational structure, and practical assignments including writing assignments and public speaking. DCO attendees will complete a basic swim test and fitness test including push-ups, sit-ups, and a 1.5 mile run. You will receive a Pre-Reporting Guide from the school staff with more information. Following DCO school, you will return to your duty station.

Funded J.D. program graduates typically attend DCO school in late summer or early fall.

5. Naval Justice School (NJS) – Basic Lawyer Course (BLC)

After taking the bar exam or graduating from the DCO course, as applicable, you'll receive orders to Newport, Rhode Island, for the 10-week BLC at NJS alongside your Navy and Marine Corps counterparts. If

U.S. Coast Guard
Office of the Judge Advocate General

you're assigned to a military justice billet, you will also complete a 2-week Military Justice Orientation Course (MJOC) immediately after the BLC.

You will typically attend the first available BLC, offered in January, May and August.

Service Obligation

Selectees will accrue obligated service in accordance with the Performance, Training, and Education Manual, COMDTINST M1500.10 (series). Normally, this results in a five-year service obligation.

Grade

Officers: Selectees will follow normal promotion schedules during law school.

Enlisted members: Selectees will follow normal advancement schedules during law school and commission as an O-3 or O-3E, as applicable, upon graduation.